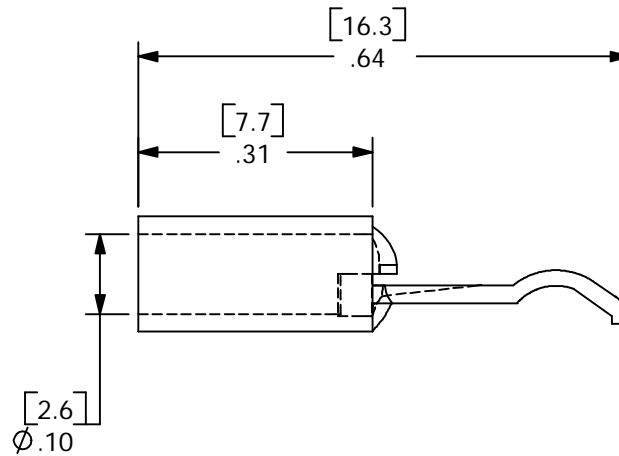
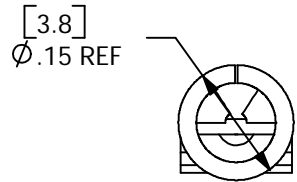
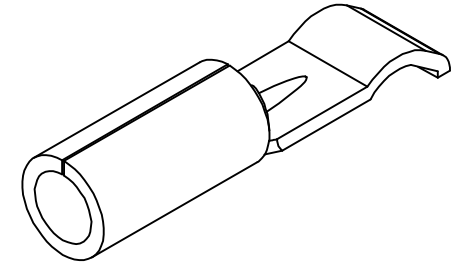
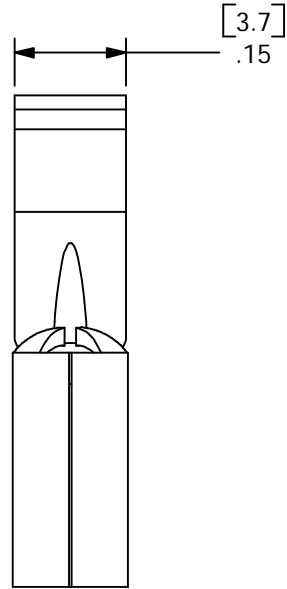


THE INFORMATION CONTAINED IN THIS DRAWING IS THE SOLE PROPERTY OF ANDERSON POWER PRODUCTS. ANY REPRODUCTION IN PART OR WHOLE WITHOUT THE WRITTEN PERMISSION OF ANDERSON POWER PRODUCTS IS PROHIBITED.

ANDERSON POWER PRODUCTS RESERVES THE RIGHT TO ALTER PRODUCT TYPES, THEIR TECHNICAL DATA, DIMENSION, STYLE AND ACCESSORIES WITHOUT PRIOR NOTIFICATION.

REV.	DESCRIPTION OF CHANGES	BY:	DATE
1	ECRN 13220: REDRAWN	CMS	6/25/99
2	ECRN 13433	CMS	10/23/01



16-20 AWG Wire
1,35 - 3,3 mm² (max 4mm²)
Helistore Gugolz

ITEM NO.	PART OR IDENTIFYING NO.	NOMENCLATURE OR DESCRIPTION	MATERIAL SPECIFICATION	QTY REQD
COPYRIGHT 1999 ANDERSON POWER PRODUCTS. ALL RIGHTS RESERVED. UNAUTHORIZED REPRODUCTION HEREBY PROHIBITED.				
DIMENSIONS ARE IN INCHES DIMENSIONS IN PARENTHESES [] ARE IN MILLIMETERS		CAD GENERATED DRAWING, DO NOT MANUALLY UPDATE		ANDERSON POWER PRODUCTS CATALOG NUMBER 1331 PP30 CONTACT FOR #12-#16 AWG WIRE
TOLERANCES ARE: 2PL- ±.02 [±.5]		APPROVALS	DATE	
MATERIALS: COPPER		DRAWN RLE	3/11/97	
FINISH SILVER PLATE		CHECKED DJD	10/9/01	
NEXT ASSY	USED ON	RESP ENG UFN	3/11/97	SPECIFICATION: 114018S2
APPLICATION	DO NOT SCALE DRAWING	MFG ENG CHB	10/21/01	
		QUAL ENG RPO	10/10/01	
		SCALE NONE	CADFILES/01057	REV. 2